

# PREMISYS INSTALLS AND UPGRADES

## ABSTRACT

This document describes and walks through the different types of installs and Upgrades for the Premisys Software.

Apr 11, 2018

## Table of Contents

Revision History.....	2
Fresh Install.....	3
Custom Install.....	4-5
Installing to Existing SQL Server.....	6
Installing With Existing Databases .....	7
Premisys Upgrade.....	8-9

# PREMISYS INSTALLS AND UPGRADES

## Revision History

Revision Date	Revision Number	Author	Comments
4/10/2018	1.0	RR	First Draft

## Fresh install of Premisys Software

1. Right-click the ZIP file and select "Extract all" to an easy-to-find location on your PC.
2. Use Win7 Pro (32 or 64 bit), Win8/8.1, or Win10. "Home" versions aren't supported. To confirm your OS, right-click "My computer" icon on your desktop, select Properties. To view OS details in Win7, scroll down.
3. Internet Information Services (IIS) must be installed first. To do so:
  - a. Press the windows key plus R to bring up the run command and type optionalfeatures then hit enter.
  - b. Once at the windows features box find the Internet Information Services option and expand everything bellow it, making sure everything is exposed should be around 43 check boxes.
  - c. Check each of the boxes under Internet Information Services EXCEPT for FTP and WebDAV Publishing. Once all have been checked click OK and allow Windows to install the necessary features.
  - d. Once done with this step you are now ready to proceed with the install.
4. Run "Setup.exe" from the main folder of the extracted zip file. The default selections that appear during the installation wizard should be fine. Use "Server" when asked which components to install. Use "New" when asked to install SQL. This step may take up to 45 minutes, with no obvious progress bar visible.
5. Double-click the new PremiSys icon on your desktop, or right-click it and select "Open." The default login is: (username) Admin (Password) Badge1.

## Custom Premisys Install

1. Install the SQL Instance you wish to use (unless one already exists).
2. Click on the link below and download the SQL Server Management Studio.
  - a. <https://docs.microsoft.com/en-us/sql/ssms/download-sql-server-management-studio-ssms>
3. Once Downloaded, open SQL Sever Management Studio and type the appropriate SQL Instance name and login and click connect.
4. Once logged make sure that SQL allows both windows logins as well as SQL Server accounts. This can be done by right clicking on the database Instance and selecting properties. Then click on security and make sure under server authentication that SQL Server Logins are enabled and click ok.
5. Expand the Security folder and right click on Logins folder. Select new login and create user PremiSysUsr , select SQL Server authentication and give it the password **ID3nt1cardID3nt1card**.

**NOTE: Make sure to only check Enforce password policy**

6. **Install Premisys -- it will fail when it tries to start the services. Leave it at the "Retry" window.**

## Custom Premisys Install Cont.

7. Modify the encrypted password in three places in each file below, with the encrypted password: **qnkBzJDgADBCnuR83Z/U5hHqiq+YKr+r9t5TqWq9iWw=**
  - a. C:\Program Files\Identocard\localconfigv2.config
  - b. C:\Inetpub\wwwroot\IDentocard\web.config
  - c. C:\Inetpub\wwwroot\IDentocard\Services\web.config
8. In most cases the the install will change the password back to the original password and the PremiSysUsr account will be locked out.
9. Login to Sql Server Management Studio and go to the properties of PremiSysUsr.
10. Click the status tab and under status: SQL Server Authentication: uncheck Login is locked out.
11. Go back to the General tab and set the password back to the original desired custom password.
12. Click the Retry button and the Premisys install should complete successfully.

## **Installing to Existing SQL Server**

- 1. To install Premisys with an existing SQL Server unzip the PremiSys installation files.**
- 2. In the unzipped folder double click on Setup.exe to start the install.**
- 3. Click next, accept the license agreement and click next.**
- 4. Select Server and click next and next again.**
- 5. Select Existing and click next**
- 6. Enter the server instance name and click next.**
- 7. Enter the SA credentials if prompted and click next.**
- 8. The name of the computer will automatically generate in the box for service location so click next.**
- 9. Click finish.**

# Premisys Install With Existing Databases

**NOTE: THE FOLLOWING INSTALL INSTRUCTIONS ARE FOR WHEN YOU PREVIOUSLY HAD THE PREMISYS AND CARDHOLDERS DATABASE.**

1. To run the install unzip the PremiSys installation files.
2. In the unzipped folder double click on Setup.exe.
3. Click next.
4. Check the box to accept the agreement and click next.
5. Select Client, IDenticard Services and Components Requiring IIS, Click next.
6. Enter the instance name of SQL in the box provided and click next.
7. Select SQL Authentication and enter the credentials for the SA account and click the Test Connection button (You should receive a green check to let you know it passed) then click next.
8. Click the Install button.



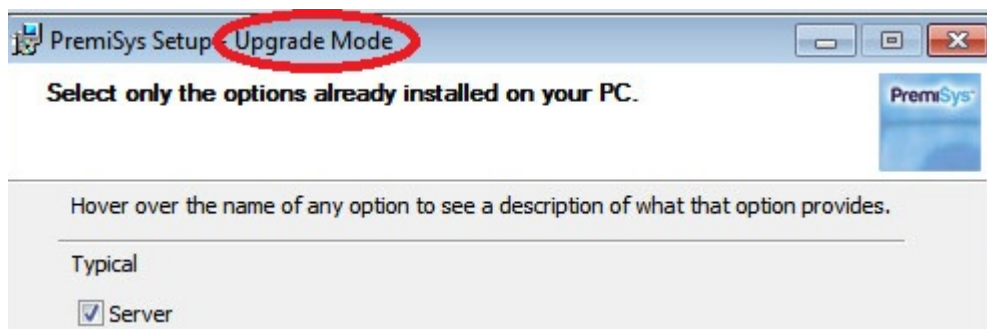
## Upgrading Premisys Software

1. Before running an upgrade be sure to make a backup by going to Tools>Backup/Restore.
2. In addition to a Premisys backup SQL backups can be made as well.
  - a. Hold down windows key and R to open the run command and type services.msc and hit enter.
  - b. Find and stop the Identocard Windows Service, IDenticard Scheduling Service and SQL Server ("Instance name")
  - c. Then browse the following location C:\Program Files\Microsoft SQL Server, and select the appropriate instance.
  - d. Double Click on MSSQL, then double click on DATA and copy the following files.
    - i. PremiSys.mdf
    - ii. PremiSys\_Log.ldf
    - iii. CardHolders.mdf
    - iv. CardHolders\_Log.ldf
  - e. Place those files in another location and you now have the SQL Backups.
3. To run the upgrade unzip the PremiSys installation files.
4. In the unzipped folder double click on Setup.exe to start the upgrade.

## Upgrading Premisys Software Cont.

5. Click next, accept the license agreement and click next.

**NOTE: PLEASE CHECK TO MAKE SURE THAT AT THE TOP OF THE SETUP BOX IT SAYS UPGRADE MODE AS SHOWN IN THE PICTURE BELOW. IF IT DOES NOT PLEASE DO NOT PROCEED AND CALL TECH SUPPORT AT (800-220-8096)**



6. Check only the box for Server and click next.
7. Click upgrade.

**NOTE: IF IT ASKS FOR DATABASE CREATION CREDENTIALS YOU NEED TO SELECT SQL AUTHENTICATION AND USE THE SA ACCOUNT THEN CLICK TEST CONNECTION AND HIT NEXT**

8. Click finish.